



YOU ALWAYS PROMISED YOURSELF ONE DAY YOU'D HAVE IT ALL.

IS

 **LEXUS**  
The pursuit of perfection



Lowry  
Audi

## IT WAS DESIGNED TO MAKE LUXURY A STANDARD FEATURE.

At Lexus we know that when you buy a car, you expect to enjoy the luxuries you've earned, which is why every IS offers you the complete package of Lexus features - technology, state-of-the-art safety and hand-crafted beauty - bringing the pursuit of perfection that much closer.

- 8-way electrically adjustable front seats with lumbar support ensure everyone enjoys optimum comfort
- Full leather interior
- Auto-retractable electro-chromatic, heated exterior mirrors with memory darken to avoid the glare of vehicles behind you\*\*
- Cruise Control\*
- Lexus Premium Surround Sound System
- Compatible Bluetooth® mobile phones are able to interact wirelessly with the onboard computer. Addresses and phone numbers can be transferred from your mobile phone to the vehicle
- The Back Guide Monitor displays a camera's view of what is detected behind the vehicle when reversing\*
- Dual auto climate control allows the driver and front passenger to set their own comfort level, with the option to activate the automatic air filter recirculation mode
- Smart keyless entry automatically detects the approaching driver and unlocks the doors when the handle is touched. The Smart ignition system allows the car to start even if the key is still in your pocket
- Park Distance Control uses sensors mounted to the front and rear bumpers to alert the driver to obstacles in the vehicle's path\*

## THE BALANCE OF POWER.

- The IS range is available in two engine derivatives, a 2.5 litre V6 producing 153 kW and 252 Nm of torque, and a 3.5 litre V6 engine producing 233 kW and 378 Nm of torque
- The IS 250 will accelerate to 100 km/h in 8.4 seconds, with the IS 350 completing the sprint in a mere 5.6 seconds
- Equipped with a 6-speed transmission for enhanced performance
- Dual Variable Valve Timing continuously adjusts the engine's valve timing to provide optimum power and fuel economy at any speed
- AI-Shift control automatically changes gear shift patterns in response to road conditions and driving behaviour
- Sequential shift paddles allow for swift manual gear changing without the driver's hands leaving the steering wheel
- Switching to power (PWR) mode will enable quicker down-shifts and enhance throttle response times

## COMPLETELY SAFE.

- Vehicle Dynamics Integrated Management (VDIM) System uses a sophisticated network of sensors to automatically apply various stability measures as needed to enhance overall safety and comfort. This includes advanced braking (ABS, EBD, BAS) and steering systems coupled with Vehicle Stability Control (VSC) and Traction Control (TRC) that enhance driving ability and control in adverse conditions
- A range of structural reinforcements, as well as front and rear crumple zones, help protect you and your passengers
- Eight airbags help protect you and your passengers in different types of frontal and side collisions

\*EX and SE models only

\*\*SE model only

## EXTERIOR COLOUR



077 White Pearl



1G1 Hakunen Silver



217 Starlight Black



3R1 Morello Red



Mercury Grey 1H9



8U9 Silvery Blue



9AL Catteleya\*



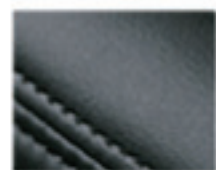
8V3 Lapis Lazuli



Fire Agate 4V3

\* Not available on IS 350

## INTERIOR TRIM OPTIONS



Black



Ecrú



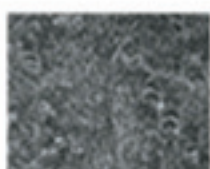
Lt Grey



Piano Black  
E/EX



Brown Wood  
SE



Grey Wood  
Lt Grey Leather only  
SE

## IS SPECIFICATIONS

	IS 250	IS 350
<b>Engine</b>		
Cylinders/valves	V6/24	
Capacity (cc)	2500	3456
Power (kW @ r/min)	153 @ 6400	233 @ 6400
Torque (kW @ r/min)	252 @ 4800	378 @ 4800
Bore x Stroke (mm)	83 x 77	94 x 83
6-speed automatic transmission with sequential paddle shift	•	•
<b>Performance</b>		
Max speed (km/h)	225	230
0-100 km/h (seconds)	8.4	5.6
Fuel consumption - combined (l/100 km)	91	94
CO <sub>2</sub> emissions combined (g/km)	214	223
<b>Brakes</b>		
Front	Ventilated Disc	
Rear	Ventilated Disc	
<b>Suspension Type</b>		
Front	Double Wishbone	
Rear	Multi-link	
<b>Weight</b>		
Gross vehicle mass (kg)	2045	2065
Kerb weight (kg)	1530-1620	1580-1645
Towing capacity with brakes (kg)	1500	-
<b>Dimensions and Capacities</b>		
Length (mm)	4585	4585
Width (mm)	1800	1800
Height (mm)	1425	1425
Wheelbase (mm)	2730	2730
Fuel Tank (l)	65	65
Luggage Capacity (l)	398	398
<b>Safety and Security</b>		
Anti-lock Brake System (ABS)	•	•
Brake Assist System (BAS)	•	•
Electronic Brake force Distribution (EBD)	•	•
Vehicle Stability Control (VSC)	•	•
Traction Control (TRC)	•	•
Vehicle Dynamics Integrated Management System (VDIM)	•	•
Dual Stage Driver and passenger airbags	•	•
Driver and passenger knee protection airbags	•	•
Side airbags for driver and front passenger	•	•
Curtain airbags for front and rear passengers	•	•

## IS SPECIFICATIONS

	IS 250		IS 350	
	E	EX	EX	SE
<b>Safety and Security</b>				
HID/Auto-levelling headlamps with wash system			*	*
LED daytime running lights			*	*
Front and rear fog lamps	*	*	*	*
Anti-theft system with intrusion sensor and siren	*	*	*	*
ISO-FIX rear child seat anchors with top tethers	*	*	*	*
<b>Warranty and Maintenance</b>				
Warranty - 4 years/100 000 km mechanical and 6 year corrosion	*	*	*	*
Lexus Distance Plan - 4 years/100 000 km	*			
Lexus Distance Plan Plus - 4 years/100 000 km		*	*	
Lexus Distance Plan Complete - 4 years/100 000 km				*
Service intervals - 15 000 km	*	*	*	*
<b>Features</b>				
8-way electrically adjustable front seats with lumbar support	*	*	*	*
Driver seat memory				*
Heated and cooled front seats				*
Full Leather interior	*	*	*	*
Dual auto climate control with pollen filter	*	*	*	*
Tilt and telescopic steering column	*	*	*	
Electrically-adjustable steering column with memory				*
Leather steering wheel with multi-function switches	*	*	*	*
7" Electronic Multi-Vision (EMV) touch screen display		*	*	*
HDD Navigation, Bluetooth® and voice command		*	*	*
Lexus Premium Surround Sound System with 8 speakers, 6 CD changer, with AUX jack and USB port	*			
Lexus Premium Surround Sound System with 13 speakers, 6 CD changer, with AUX jack and USB port		*	*	*
Tilt and slide moonroof				*
Soft suspension				*
Park Distance Control (PDC)		*	*	*
Reverse camera with back guide monitor		*	*	*
Illuminated entry system with scuff plates				*
Smart keyless entry and ignition system	*	*	*	*
Cruise Control		*	*	*
Rain-sensing windscreen wipers				*
Electric rear window sunshade				*
Interior electro-chromatic rear view mirror				*
Retractable heated exterior mirrors	*	*	*	
Auto-retractable electro-chromatic, heated exterior mirrors with memory				*
Tyres (front 205/55 R16, rear 205/55 R16)	*			
Tyres (front 225/45 R17, rear 245/45 R17)		*	*	
Tyres (front 225/40 R18, rear 255/40 R18)				*



**LEXUS IS. Engineering complete moments.**  
To book your drive experience visit [www.lexus.co.za](http://www.lexus.co.za)

Part No. PMN04T0004. Date: 2011/09. Certain vehicle details and specifications contained in this brochure may differ from available models. Toyota Motor Corporation of Japan and Toyota S.A. (Pty) Ltd make no warranties, either expressed or implied, concerning the verisimilitude of contained material. Toyota reserves the right to alter any details of specifications and equipment without notice. Waste Tyre Registration Number: TPREG0031GAU