

THE NEW GS

A powerful change



 LEXUS



A POWERFUL CHANGE

NEW LEXUS DRIVING EXPERIENCE, BOLD NEW DESIGN

The all-new GS range completely redefines the performance sedan. Powered by either the world's most advanced Full Hybrid drivetrain, or a choice between a smooth 2.5 litre or dynamic 3.5 litre V6 petrol engines, all models accelerate quickly and are exhilarating to drive. Handling is precise and engaging, thanks to an all-new chassis and suspension, while the GS 450h F-Sport offers the additional refinement of allwheel steering. Inside, the spacious GS cabin sets new benchmarks for comfort, craftsmanship and advanced technology. This includes the widest multimedia screen available today, sophisticated relaxation features for the front seat passenger, and class-redefining driver support technologies.



ARRIVE WITH PRESENCE

NEW L-FINESSE DESIGN, CLASS-LEADING AERODYNAMICS

The GS sedan has been created using a bold, new version of our L-finesse design language. Starting from scratch, our designers have given the GS a totally new look, the focal point being its dramatic, purposeful front 'spindle grille'. Jewel-like headlights greatly enhance driver vision, while LED daytime running lights give it an unmistakable aura. In profile, the car's muscular stance contrasts with its lean waistline and long streamlined cabin section, to give it unique presence and exceptional roominess for up to five occupants. Underlying the powerful form, extended wheel arches hint at superb, dynamic handling. Innovations that contribute to the car's class-leading aerodynamics include smooth underbody covers and closable vents on the GS 450h's radiator grille, with fins on the rear lights increasing driving stability and reducing wind noise inside the cabin.





GS 250 EX

IMPECCABLE RESPONSE

DYNAMIC V6 POWER, PADDLE SHIFT TRANSMISSION

The all-new GS 250 comes with a 2.5-litre V6 petrol engine delivering 154kW of power. Smooth and very rewarding to drive, this dynamic new performance sedan will accelerate to a top speed of 230 km/h, where legally permitted. Engineered for lightness and strength, its aluminium-alloy V6 offers superb balance and durability, while leading edge sound engineering creates an excitingly resonant engine note. Surpassing Euro V emissions requirements, advanced D-4 direct injection and dual VVT-i valve control ensure both power and economy across the entire rev range. Driving the rear wheels, the GS 250's 6-speed automatic transmission features paddle shifts and a manual 'M' mode for enhanced driving pleasure.



GS 350 EX EFFORTLESS EXHILARATION

233kW POWER, PRECISION AND PRESTIGE

The GS 350 model combines the powerful and refined 3.5 litre V6 engine with the dynamic GS chassis to offer 233 kW of power. The 3.5 litre V6 engine utilizing a combination of D4-S direct injection, conventional port injection and VVTi, delivers effortless acceleration in a smooth and linear fashion, with an accompanying sporty engine note that engages the driver and passengers. The engine also offers great flexibility with 90% of the peak torque figure of 378Nm being available from as low as 2000rpm. A 6 speed automatic transmission with paddle shift and Artificial Intelligence, which automatically adapts to individual driving styles, is employed to transmit the power to the rear wheels. The GS 350 offers the perfect balance of refinement, power and exhilaration.



GS 450h THE POWER OF h



CLASS-LEADING FULL HYBRID PERFORMANCE, EV MODE

Benefitting from over a decade of Lexus leadership and innovation in Full Hybrid technology, the GS 450h delivers breathtaking performance, thanks to its powerful Lexus Hybrid Drive. Comprising a 3.5-litre V6 direct-injection Atkinson Cycle petrol engine and two high-output electric motors, this intelligent partnership develops 252 kW for a thrilling drive. Acceleration is smooth and incredibly rapid (100 km/h in 5.9 seconds) yet fuel consumption remains excellent at 6.2 l/100 km, whilst offering class leading CO₂ emissions of 139 g/km. Select EV (Electric Vehicle) mode and the GS 450h drives in near silence, using no petrol and emitting zero CO₂ or NO_x. However, this new Lexus Full Hybrid is very practical too; the redesigned hybrid battery occupies minimum room, resulting in a generous 482 litres of boot space.



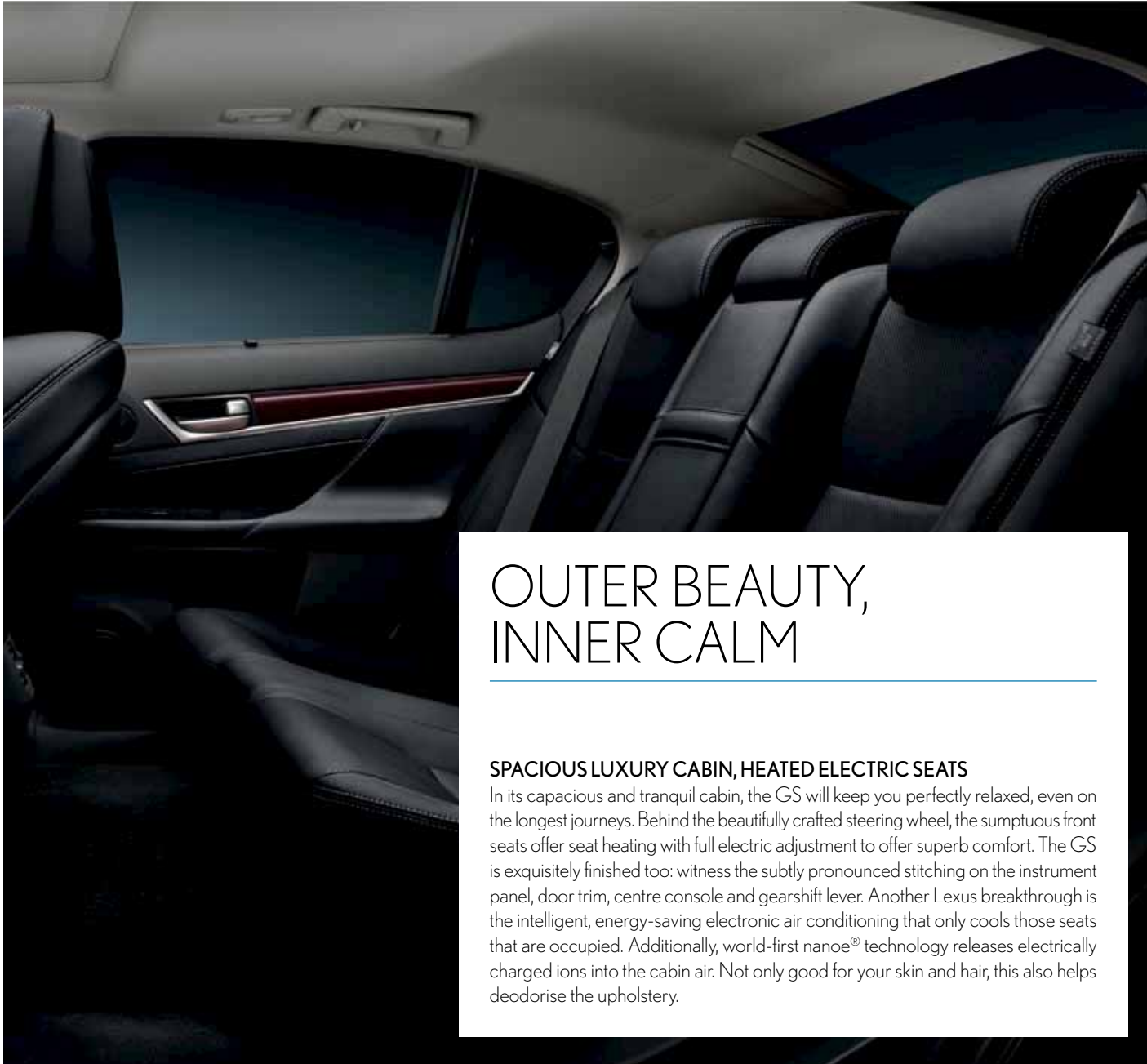
GS F SPORT DYNAMIC ATTRACTION

F SPORT STYLING, 19-INCH ALLOYS, LEXUS DYNAMIC HANDLING

The new GS 450h F SPORT is unmistakably dynamic. Witness the aggressive F SPORT front-end styling - that integrates upper and lower honeycomb grilles - the 19-inch alloy wheels, and the discrete rear spoiler. Inside, the cockpit features a 16-way sports driver's seat, aluminium pedals and scuff plates, with the steering wheel and gearshift finished in perforated leather. Developed at the Nürburgring by the team that perfected our LFA V10 supercar, the GS F SPORT models offer an incredibly precise and exciting drive. This is thanks to leading edge technologies such as 356 mm 2-piece front brakes and Adaptive Variable Suspension (AVS). For even more thrilling performance, an additional breakthrough on the GS 450h F SPORT is 'Lexus Dynamic Handling' that networks AVS, Variable Gear Ratio Steering, Dynamic Rear Steering and Vehicle Dynamics Integrated Management.







OUTER BEAUTY, INNER CALM

SPACIOUS LUXURY CABIN, HEATED ELECTRIC SEATS

In its capacious and tranquil cabin, the GS will keep you perfectly relaxed, even on the longest journeys. Behind the beautifully crafted steering wheel, the sumptuous front seats offer seat heating with full electric adjustment to offer superb comfort. The GS is exquisitely finished too: witness the subtly pronounced stitching on the instrument panel, door trim, centre console and gearshift lever. Another Lexus breakthrough is the intelligent, energy-saving electronic air conditioning that only cools those seats that are occupied. Additionally, world-first nanoe[®] technology releases electrically charged ions into the cabin air. Not only good for your skin and hair, this also helps deodorise the upholstery.



THE BIG PICTURE

WORLD'S WIDEST MULTIMEDIA DISPLAY, REMOTE TOUCH

The new GS delivers sophisticated luxury and comfort, thanks to an ergonomic cockpit separated clearly into Display and Operation zones to minimise driver eye movement. The car is fitted with a 12.3-inch multimedia display, the world's widest. Using our next-generation Remote Touch device, you can interact with the car's advanced equipment to navigate using high-definition maps, or enjoy perfect sound clarity with the 12 speaker Lexus Premium sound system. The 17-speaker Mark Levinson® Premium Surround system on the GS 450h SE offers a home theatre like audio experience. Attention to detail is everywhere on this impressive new Lexus. Take, for example, the full-LED ambient white cabin lighting and precision-engineered LED analogue clock that forms a beautiful centrepiece on the instrument panel





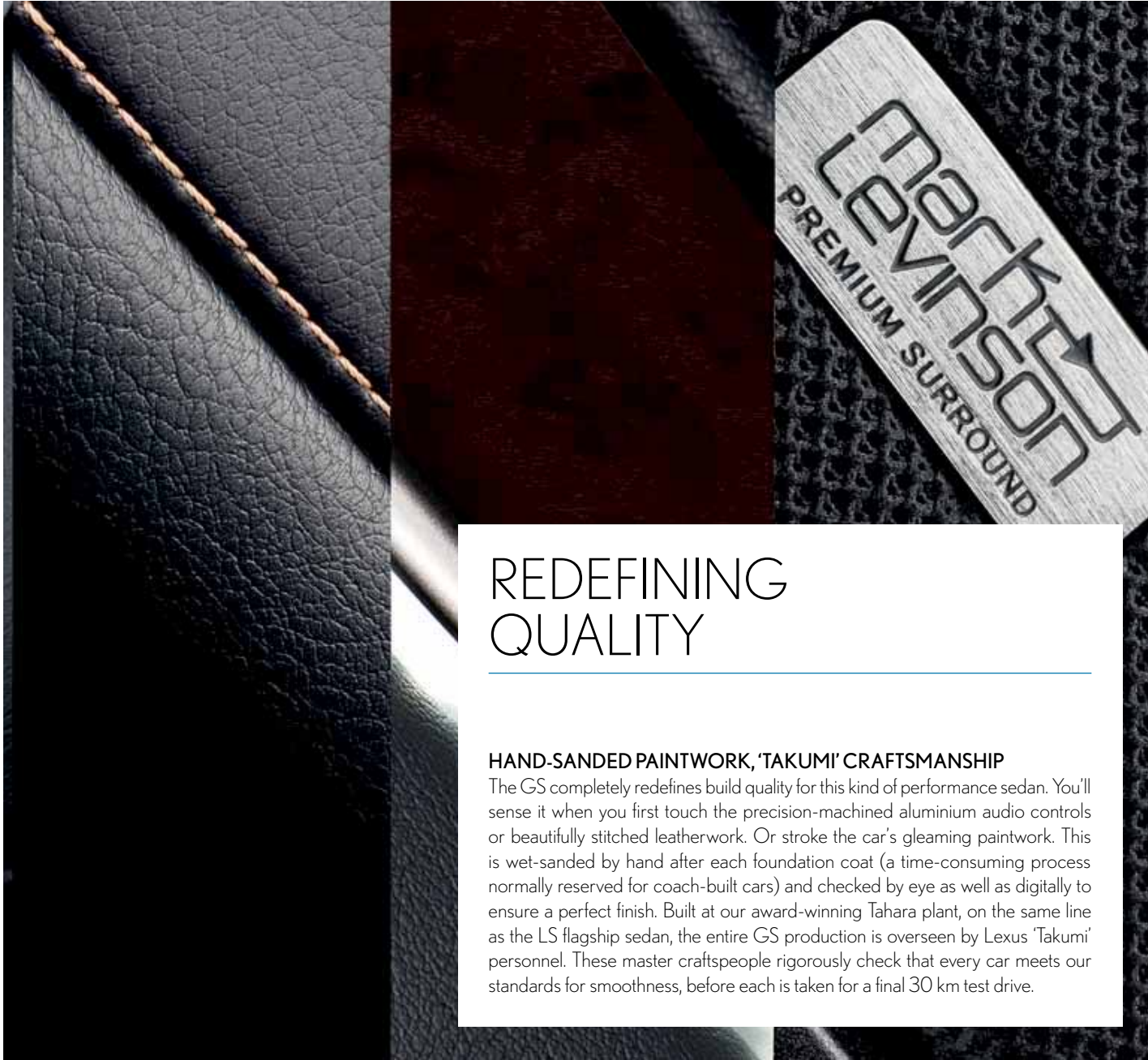


ENGINEERED FOR ENJOYMENT

NEW CHASSIS, MULTI-LINK SUSPENSION

Our fourth-generation GS delivers the most engaging and pleasurable drive ever offered by a Lexus sedan. You'll enjoy sharp, accurate steering and excellent control when cornering. And, on the motorway, world-class high-speed stability and Lexus ride comfort. This improvement in driving performance has been achieved in a number of ways. The chassis is stiffer and has been totally re-engineered, while the all-new suspension includes a more compact rear multi-link design that greatly increases boot space. The car also has powerful new brakes and leading edge technologies with certain models offering Adaptive Variable Suspension and Dynamic Rear Steering. The new GS features Drive Mode Select that allows you to conveniently switch between ECO, NORMAL, SPORT S and SPORT S+ (F-Sport model) driving modes, maximising either the vehicle's environmental efficiency or tuning its dynamics for a sportier drive.





REDEFINING QUALITY

HAND-SANDED PAINTWORK, 'TAKUMI' CRAFTSMANSHIP

The GS completely redefines build quality for this kind of performance sedan. You'll sense it when you first touch the precision-machined aluminium audio controls or beautifully stitched leatherwork. Or stroke the car's gleaming paintwork. This is wet-sanded by hand after each foundation coat (a time-consuming process normally reserved for coach-built cars) and checked by eye as well as digitally to ensure a perfect finish. Built at our award-winning Tahara plant, on the same line as the LS flagship sedan, the entire GS production is overseen by Lexus 'Takumi' personnel. These master craftspeople rigorously check that every car meets our standards for smoothness, before each is taken for a final 30 km test drive.



ADVANCED EQUIPMENT



DRIVE MODE SELECT

You can tune the performance of the GS by choosing between different driving modes., which range from ECO to SPORT S+. Or simply press EV mode to use purely electric power over shorter distances.



SPORT S AND SPORT S+

Switch to SPORT S and the Lexus Hybrid Drive powertrain provides faster throttle responses for a more engaging drive. And in SPORT S+ (GS 450h F-Sport) continuous electronic chassis control delivers exceptionally dynamic handling.



REVERSE CAMERA

Engage reverse and the view behind the car is relayed to the standard 8-inch display, complete with on-screen guides to assist parking. With the 12.3-inch display, the split-screen additionally hews a parking assist sensor graphic.



EV ANDECO

With the battery sufficiently charged, EV mode lets you drive at lower speeds using just the electric motor. ECO blends petrol and electric power for increased speed, while minimising emissions and fuel consumption.



HEATED SEATS

In combination with leather upholstery, the driver and front passenger can individually heat or ventilate their seats as desired. This adds to the sense of bespoke luxury and is especially welcome in extreme weather conditions.

INTERIOR FEATURES



12.3-INCH MULTIMEDIA DISPLAY

The new, high resolution, 12.3-inch multimedia display is the widest available in a series production vehicle. Driver and front passenger can interact with multiple display screens using Remote Touch, while voice commands also control a number of applications. The split-widescreen is optimised for simultaneously viewing two types of information, for example large map display and radio station information.



HARD DISK DRIVE NAVIGATION

With crisp and clear graphics and an array of mapping options, Hard Disk Drive (HDD) navigation is intuitive to use, reacting swiftly to user input. Combined with Dynamic Route Guidance it can also suggest alternative routes to avoid traffic delays.



REMOTE TOUCH

Next generation Remote Touch, with single press confirmation, lets users interact intuitively with the central multimedia display. Ergonomically designed, it is close at hand and as easy to use as a computer mouse.



DIGITAL MEDIA

You can synchronise multiple digital applications to the multimedia display. Download your smart phone's entire address book and scroll through it on the display. Or view and operate your iPod® or other multimedia devices via different display screens.

LEADING EDGE SAFETY



HEAD-UP DISPLAY

Vehicle data, such as speed, is projected directly onto the windscreen within the driver's field of vision. Navigation commands, audio settings or other selected information can also be viewed in the Head-Up Display.

- Only available on the GS 450h



BI-XENON HEADLIGHTS

High Intensity Discharge (HID) bi-xenon headlights are specified with auto-levelling, high-pressure cleaners and Light Emitting Diode (LED) daytime running lights as standard. Adaptive Front-lighting System (AFS) and Automatic High Beam (AHB) are also available.



ADAPTIVE VARIABLE SUSPENSION

The damping force at all four wheels is intelligently controlled by the Adaptive Variable Suspension in response to road surface conditions and driver input. This not only improves ride comfort, but also increases handling stability.



LEXUS DYNAMIC HANDLING

Exclusive to the GS 450h F SPORT, Lexus Dynamic Handling elevates driving performance to a new dimension. Variable Gear Ratio Steering and Dynamic Rear Steering control all four wheels independently.



BLIND SPOT MONITOR

Radar devices mounted in the rear bumper detect vehicles in adjacent lanes that are not visible in the door mirrors. The moment a vehicle enters the blind spot, the driver is warned by a signal in the relevant door mirror(s).

- Only available on the GS 450h SE

F SPORT DESIGN

The new GS can be specified as an exclusive F SPORT version. Distinctive, motorsport inspired exterior styling and unique interior detailing create a highly-tuned sense of sporting intent.



F SPORT STEERING WHEEL

Grip the perforated leather steering wheel, with its F SPORT logo, and there is a tangible sense of being at-one with this high performance sedan.



FRONT STYLING AND GRILLE

With its distinctive honeycomb grille and eye-catching front of the F SPORT makes a bold and assertive design statement.



REAR STYLING

The rear spoiler not only improves down-force and aerodynamic efficiency, it also adds a final, dynamically stylish touch to the exterior of the F SPORT.



19" ALLOY WHEELS

The exclusive F SPORT design 19" alloy wheels are shod with low-profile tyres for exceptional cornering grip. 356 mm disc brakes ensure immense stopping power.



DRILLED SPORT PEDALS

Drilled aluminium pedals reflect the motorsport design heritage of the new GS F SPORT model. High-grip, they are exceptionally responsive.



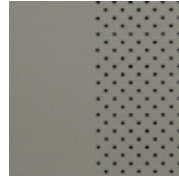
INTERIOR COLOURS

LEATHER (EX)

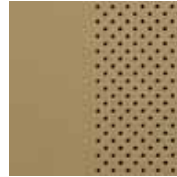
Black



Light Grey



Ivory



F SPORT LEATHER (GS 450h F SPORT)

Black

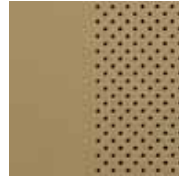


SEMI-ANILINE LEATHER (GS 450h SE)

Black

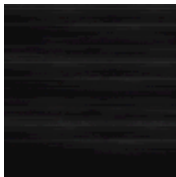


Ivory



INLAY*

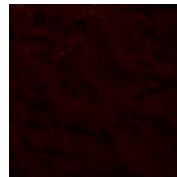
Black (gloss finish) (EX)



Aluminium (F SPORT)



Walnut (matt finish) (SE)



* Black gloss inlay is specified with EX models. Aluminium is specified with F SPORT leather. Walnut wood inlay is available with semi-aniline leather.





EXTERIOR COLOURS

WHITE PEARL (077 CS)



SONIC SILVER (1J2)



BLACK (212 S)* F-SPORT ONLY



STARLIGHT BLACK (217 GF)



MERCURY GREY (1H9 MC)



DARK OPAL (214 MC)**



CRIMSON RED (3S8 GF)



SLEEK ECRU (4U7 ME)



METEOR BLUE (8W3 MM)



LAPIS LAZULI (8V3 MC)



FIRE AGATE (4V3 MM)



* Solid colour
** GS 450h only
Please note: the F SPORT is only available in White Pearl, Sonic Silver, Crimson Red, Black and Mercury Grey.

TECHNICAL DATA

SPECIFICATIONS	GS 250 EX	GS 350 EX	GS 450h F-Sport	GS 450h SE
Engine	4GR-FSE	2GR-FSE	2GR-FXE	2GR-FXE
	6 cylinders, V-configuration	6 cylinders, V-configuration	6 Cylinder, V-configuration	6 Cylinder, V-configuration
	Displacement: 2500 cm ³	Displacement: 3456 cm ³	Displacement: 3456 cm ³	Displacement: 3456 cm ³
	95 octane or higher	95 octane or higher	95 octane or higher	95 octane or higher
Transmission	RWD (Rear Wheel Drive)	RWD (Rear Wheel Drive)	RWD (Rear Wheel Drive)	RWD (Rear Wheel Drive)
	6-Speed Automatic (A960E)	6-Speed Automatic (A760E)	E-CVT	E-CVT
Suspension: Front	Double wishbone	Double wishbone	Double wishbone	Double wishbone
Suspension: Rear	Multi-Link	Multi-Link	Multi-Link	Multi-Link
Lexus Dynamic Handling with Four-wheel steering	-	-	•	-
Fuel Consumption (combined)	8.9 l/100 km	9.4 l/100 km	6.2 l/100 km	6.2 l/100 km
CO ₂ (combined)	215 g/km	223 g/km	139 g/km	139 g/km
Acceleration (0-100 km/h)	8.8 seconds	6.3 seconds	6.1 seconds	6.1 seconds
Emissions control	Euro 5	Euro 5	Euro 5	Euro 5
Maximum output	154 kW @ 6400 rpm	233 kW @ 6400 rpm	213 kW @ 6000 rpm	213 kW @ 6000 rpm
Maximum torque	253 Nm @ 4800 rpm	378 Nm @ 4800 rpm	345 Nm @ 4600 rpm	345 Nm @ 4600 rpm
Total System output (Hybrid)	-	-	252 kW	252 kW
Electric Motor Output (Hybrid)	-	-	147 kW	147 kW
Electric Motor Torque (Hybrid)	-	-	275 Nm	275 Nm
Electric Motor Voltage (Hybrid)	-	-	650 V	650 V
SAFETY				
ABS, BAS, EBD, EPS, VSC, TRC	•	•	•	•
SRS Airbags - front, knee, side, curtain	8	+Rear Side	+Rear Side	+Rear Side
SRS Airbag on/off switch (front passenger)	•	•	•	•
Emergency Stop Lamp	•	•	•	•
ISO-Fix Anchor (rear)	•	•	•	•
SECURITY				
Alarm system with immobiliser (siren & sensor)	•	•	•	•
Auto door locks	•	•	•	•
Remote central locking & double door lock system	•	•	•	•
Blind spot monitor				•
Heads up display			•	•

SPECIFICATIONS	GS 250 EX	GS 350 EX	GS 450h F-Sport	GS 450h SE
EXTERIOR				
Wheels & tyres (front & rear)	F) 235/45 R18 R) 235/45 R18	F) 235/45 R18 R) 235/45 R18	F) 235/40 R19 F-Sport R) 265/35 R19 F-Sport	F) 235/45 R18 R) 235/45 R18
Tyre brand	Bridgestone	Bridgestone	Bridgestone	Bridgestone
Auto Headlamps with auto levelling and washers	HID	HID	HID	HID
Daytime Running Lights (DRL)	•	•	•	•
Front & rear fog lights	•	•	Rear Only	•
Side mirrors: Retractable, heated, EC	•	•	•	•
Side mirrors: Memory	-	-	-	•
Rain sensing intermittent wipers	•	•	•	•
F-Sport exterior styling package	-	-	•	-
Boot Spoiler	-	-	•	-
INTERIOR UTILITY & COMFORT				
Leather interior	•	•	•	Semi-aniline
Trim	Piano Black	Piano Black	Aluminium F-Sport	Walnut Wood
Adjustable front seats	D: 10 way (mem) P: 10 way	D: 10 way (mem) P: 10 way	D: 16 way Sport (mem) P: 16 way Sport	D: 18 way Lux P: 18 way Lux
Lumbar support - electric (D+P)	2 way	2 way	4 way (driver)	4 way
Seat Heating System (D+P)	•	•	•	•
Smart entry and start system (D+P+Boot)	•	•	•	•
Leather steering wheel (with multifunction controls)	•	•	•	•
Tilt and Telescopic steering	Electric	Electric	Electric	Electric
Lexus Premium Sound System	•	•	•	-
Mark Levinson Sound System	-	-	-	-
Number of speakers	12	12	12	17
MP3 player compatible (USB) including audio jack	•	•	•	•
iPod Integration	•	•	•	•
EMV display with HDD Navigation & voice command	•	•	•	•
Remote Touch	•	•	•	•
Drive Mode Select (Eco, Normal, Sport)	•	•	with Sport S+	•
Reverse camera & Back guide monitor	•	•	•	•
Automatic air conditioning with pollen filter	Dual zone	Dual zone	Dual zone	Three zone
Bluetooth with voice command	•	•	•	•
Cruise control	•	•	•	•
Electro-chromatic rear view mirror	•	•	•	•
Moonroof	-	-	-	•

* preliminary specifications

THE OWNERSHIP EXPERIENCE

LEXUS DISTANCE PLANS

INTRODUCTION

Welcome to the growing group of value-conscious people who drive Lexus. We are proud of the advanced engineering and quality construction of each vehicle we build.

The Lexus Distance Plans give you and all Lexus owners peace of mind and fixed costs motoring. The Lexus Distance Plans are fully supported and approved by Toyota SA Motors. The Lexus Distance Plans are designed to give you, the motorist, a value-added product that supports your needs by containing motoring costs. Lexus Distance Plans offer all customers access to service at any Lexus dealership in South Africa and Lexus dealerships in our neighbouring countries, i.e. Namibia, Lesotho, Swaziland and Botswana.

The Lexus Distance Plans cover all your normal operating condition services up to 4 years/100 000km. All servicing must be carried out according to the specified service intervals stipulated in the vehicle's Book of Life to ensure that the Distance Plan and the vehicles warranty remains valid.

All Lexus owners have an option to upgrade the Lexus Distance Plans. Lexus offers our customers various options in terms of choice of cover, dependent on individual requirements.

Please feel free to contact your nearest Lexus dealer for the various options to upgrade your Distance Plan. We at Lexus appreciate and value your support and aim to make vehicle ownership a positive experience for all our customers. Please read on to familiarise yourself with the Lexus maintenance plan.

INCEPTION DATE OF PLAN

The inception date of the Lexus Distance Plans will be the same as the vehicle's warranty inception date. The same will apply to all demonstration vehicles sold by a Lexus dealership.

WHAT DOES THE LEXUS DISTANCE PLAN COVER?

Covered:

- All manufacturer specified services (normal schedule) up to 4 years/100 000km whichever occurs first (*1).

WHAT DOES THE LEXUS DISTANCE PLAN PLUS COVER?

Covered:

- All manufacturer specified services (normal schedule) up to 4 years/100 000km which occurs first (*2).
- Front disc brake pads (limited to 5 sets)
- Rear disc brake pads (limited to 3 sets)

WHAT DOES THE LEXUS DISTANCE PLAN COMPLETE COVER?

Covered:

- All manufacturer specified services (normal schedule) up to 4 years/100 000km whichever comes first.
- Mechanical components - repaired or replaced due to normal wear and tear.

WHAT IS NOT COVERED BY THE LEXUS DISTANCE PLANS?

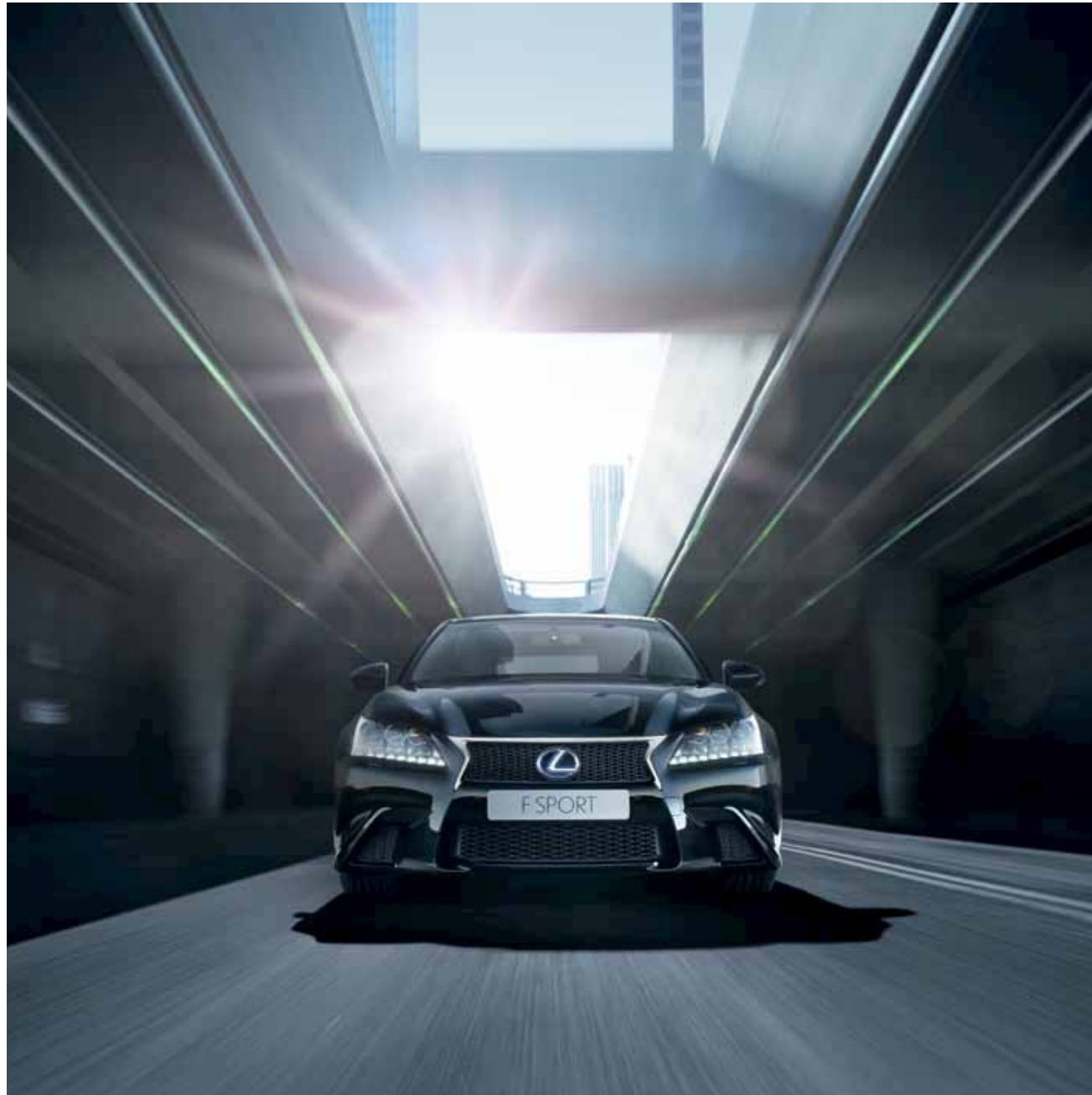
Not Covered:

- Obtaining of fuel
- Engine top up oil and other lubricants and service items required between routine servicing of the vehicle
- Tyres, wheel alignment and wheel balancing
- (*1) Maintenance repairs of wearing items for Distance Plan (e.g. brakes, clutches, exhausts, batteries, etc.)
- (*2) Maintenance repairs or wearing items for Distance Plan Plus (e.g. brake discs, brake calipers, clutches, exhausts, batteries, etc.)
- Non-Lexus approved additives

- Paint/ body/ trim repairs
- Accessories
- Unreasonable requests
- Alterations and modifications
- Driver abuse/ negligence or unreasonable use including any form of competition
- Insurance related claims and repairs
- Accident damage
- Rattles and Squeaks
- Cleaning of fuel system
- Cracked or broken glass
- Expenses incurred at non-Lexus dealers
- Flood, riot, weather and fire damage
- Engine tuning
- Repairs or damage as a result of non-compliance to service requirements or warranty obligations
- Damage incurred through the vehicle having been driven with insufficient engine lubricants or coolant
- Any claims arising outside the borders of South Africa, Namibia, Lesotho, Swaziland or Botswana
- Items requiring replacement as a result of severe operating conditions will be for the customer's account. The severe operating schedule is not covered in any of the Distance Plans

NB: Consult your Lexus dealer for more information on your vehicle's warranty terms and conditions.









THE NEW GS

The only way to truly understand what makes Lexus cars so special is to drive one yourself. Please contact your nearest Lexus Authorised Dealer or national Lexus website to arrange a test drive of the GS.

www.lexus.co.za

© 2012 Lexus South Africa* reserves the right to alter any details of specifications and equipment without notice. Details of specifications and equipment are also subject to change to suit local conditions and requirements. Please enquire at your local Lexus Authorised Dealer of any such changes that might be required for your area.

Note: vehicles pictured and specifications detailed in this brochure may vary from models and equipment available in your area. Vehicle body colour might differ slightly from the printed photos in this brochure.

For further information please visit our website: www.lexus.co.za

Taking care of the environment is a priority for Lexus. We take many measures to ensure that during the lifecycles of our vehicles - from design, production, distribution, sales and service to end-of-life - their environmental impact is minimised. Your dealer will be happy to provide more information on end-of-life vehicle requirements.

* Lexus South Africa is a division of Toyota South Africa Motors.