

LEXUS



STATE-OF-THE-ART REFINEMENT

LEXUS LS

## LS 460 ULTRA-SMOOTH PERFORMANCE

### V8 ENGINE, 8-SPEED TRANSMISSION

The LS 460 luxury sedan is an amazingly refined vehicle to drive. Powered by an ultra-smooth 4.6-litre V8 petrol engine (its crankshaft is polished by hand to ensure perfect balance) with the 8-speed automatic transmission, it sets pioneering standards for cultivated performance. Delivering smooth power and economy, the LS 460's engine has D-4S direct fuel injection and dual VVT-i.



South African vehicle specifications may differ.



## EXQUISITE CRAFTSMANSHIP

### LEATHER SEATS, REAL WOOD OR BAMBOO INLAYS

For the driver and passengers, the LS is an incredible vehicle to travel, relax or work in – even on the longest journeys. The sumptuous leather front seats are 16-way electronically adjustable, with upholstery that is 15% thicker. Quality is overseen by master craftspeople in our award-winning Tahara plant: witness the beautiful stitching detail on the leather dashboard and precision-machined aluminium controls of the audio system. For the ultimate in refinement, the steering wheel and dashboard ornamentation are available in a “Shimamoku” veneer (black/grey striped wood) that involves 67 manufacturing steps over the course of 38 days.

South African vehicle specifications may differ.

## ADVANCED TECHNOLOGY



### 19-SPEAKER MARK LEVINSON

Among the world's finest in-vehicle entertainment systems, a peerless 19-speaker Mark Levinson Reference sound system comes standard. With it, passengers enjoy perfect 7.1 channel surround sound. Bluetooth mobile phone connectivity, and an auxiliary input and USB port for use with media players, also fitted.



### BLIND SPOT MONITOR

Radar devices mounted in the rear bumper detect vehicles in adjacent lanes that are not visible in the door mirrors. If the driver is indicating to change lanes and a vehicle enters the blind spot, a warning signal appears in the relevant door mirror(s).



### LED FOG LIGHTS

The LS 460 has LED front fog lights and rear combination lights. The world's smallest-diameter LED fog lights are fitted, with a lens shape that combines beautifully with the spindle grille and LED daytime running lights.



### 12.3-INCH MULTIMEDIA DISPLAY

The high-resolution, 12.3-inch LED multimedia display is the widest available in a series-production vehicle. The driver and front passenger can interact with multiple display screens using Remote Touch, while voice commands also control a number of applications.



### MULTI-INFORMATION DISPLAY

Positioned in the upper center of the meter cluster, the large 5.8-inch colour TFT (Thin Film Transistor) Multi-Information Display provides a wide range of vehicle information, data, and warnings through user-friendly graphics.



### DYNAMIC ILLUMINATION SYSTEM

As you approach the vehicle, a Dynamic Illumination System - a world first from Lexus - switches on the door mirror lamps and clock light to welcome you. When you unlock the doors, the daytime running lights illuminate, as if the LS is awakening. Pressing the START button then activates an elegant animation on the multimedia display, followed by a gentle stream of light along the dashboard.



### "CLIMATE CONCIERGE"

"Climate Concierge" is yet another Lexus world-first innovation on the LS. Constantly monitoring temperatures inside and outside the vehicle, this integrated system automatically adjusts cabin, seat and steering wheel temperatures.



### NANOE® TECHNOLOGY

This award-winning Lexus technology releases microscopic, negatively-charged particles into the cabin. By attaching themselves to airborne particles, these nanoe® ions help purify the cabin air and effectively deodorise seats and upholstery. In addition, because their moisture content is approximately 1 000 times that of conventional ions, you'll notice a healthy moisturising effect on your skin and hair.



### EMV REMOTE CONTROLLER

Next generation Remote Touch, with single-press confirmation, lets you interact intuitively with the central multimedia display. Ergonomically designed, this highly-intuitive controller is close at hand and as easy to use as a computer mouse.

ENGINE AND DRIVETRAIN	LS 460
Number of cylinders and arrangement	8 cylinders, V type
Maximum power (kW @ r/min)	285 @ 6400
Maximum torque (Nm @ r/min)	493 @ 4100
Valve mechanism	32-valve DOHC (Dual VVT-i)
Bore x Stroke (mm)	94.0 x 83.0
Displacement (cm <sup>3</sup> )	4608
Compression ratio	11.8:1
Fuel system	EFI D-4S
Transmission	8AT Electronically Controlled Transmission (ECT)
Drive type	Rear Wheel Drive (RWD)
Sequential shift	•
AI (Artificial Intelligence) Shift control	•
Electrical A/T shift lock system	•
Suspension (front)	Multi-link Air Suspension
Suspension (rear)	Multi-link Air Suspension
Service intervals (km)	15 000
Emissions	Euro 5 w/o OBD
WHEELS AND TYRES	
Wheels	19" alloy
Tyre size	245/45R19 8J(SM)
BODY AND STYLING	
Daytime Running Lights (LED)	•
Rear combination lamps (LED)	•
Front fog lights (LED)	•
Sun roof	•
INTERIOR, EXTERIOR COMFORT AND CONVENIENCE	
Seat cover material	Semi-Aniline leather
Seat heater (driver and front passenger enhanced heating performance)	•
Seat ventilation (driver and front passenger)	•
Rear seat heater	•
Rear seat ventilation	•
Power adjustable front seats with driver and passenger memory	•
Lumbar support	D:4-way P:2-way Rr:2-way
Seat massage function	•
3-spoke steering wheel with audio, display, telephone and voice switches	Wood, Leather pad and Heater
Power steering (electric)	•
Steering column adjustments	Electric tilt and telescopic with memory
Adaptive Cruise Control	•
Smart Entry system and remote control (push-button start)	•
Mirror: colour-coded, electric, auto retractable, heater, ECM, Smart-link, illumination and memory function	•
Interior electrochromatic mirrors with auto day/night	•
Automatic air conditioner (Dual climate control with independent controls)	4-zone Climate Concierge
Electrically-adjustable windows (1-touch up/down, auto jam protection and remote control)	•
Multi-information display	•
Seat heater (driver and front passenger with enhanced heating performance)	•
TFT instrumentation	•

Analogue clock	•
Audio system (EMV, DVD, 3-Tuner, RDS and MP3 compatible)	19-speaker Mark Levinson
Rear seat entertainment	Roof mounted - Blu-ray
Full iPod integration	•
Audio input terminal (mini AUX and USB)	•
EMV navigation (colour display, HDD type, GPS navi, voice control, Bluetooth, aircon and audio compatible)	•
Drive Mode Select (Eco, Normal, Sport)	•
Tyre inflation pressure warning	•
Rear sunshade	Rear side and back windows (Auto)
Cooler Box	•
Headlights	LED-Adaptive Front Lighting System (AFS), Adaptive High-beam System (AHS)
SAFETY AND SECURITY	
Adaptive Front Lighting System (AFS)	•
Anti-lock Braking System (ABS)	•
Brake Assist (BA)	•
Electronic Brake-force Distribution (EBD)	•
Vehicle Dynamic Integrated Management	•
Vehicle Stability Control (VSC)	•
Traction control (TRC)	•
Electric Parking Brake	•
Pre-crash system (brake synchronised)	Basic and PB and Driver Monitor
Clearance and back sonar (distance information provided by MID and buzzer)	•
Back Guide Monitor (BGM)	•
Blind Spot Monitoring (BSM)	•
Driver and front passenger airbags	•
Curtain shield head airbags (front and rear)	•
Side airbags (front and rear)	•
Knee panel airbag (driver and front passenger)	•
Airbag manual on-off switch (passenger side)	•
Occupant detection (passenger seat sensor)	•
Headlamp leveling system (automatic)	•
Headlamp cleaner (pop-up nozzle cleaner)	•
High-mount brake light (with LED)	•
Child protector	Rear door
Immobiliser and alarm with anti-theft sensors (intrusion and tilt)	•
DIMENSIONS AND CAPACITIES	
Length (mm)	5090
Height (mm)	1465
Width (mm)	1875
Wheelbase (mm)	2970
Luggage capacity (ℓ)	490
Fuel tank (ℓ)	84
Acceleration (0 - 100 sec)	5.7
Top speed (km)	250
Fuel consumption (urban cycle) ℓ/100 km	11.1
CO <sub>2</sub> emissions	259

**EXTERIOR**



SONIC QUARTZ .....085



OPULENT BLUE .....8X5



SONIC SILVER .....1J2



GRAPHITE BLACK .....223



MERCURY GREY .....1H9



MORELLO RED .....3R1

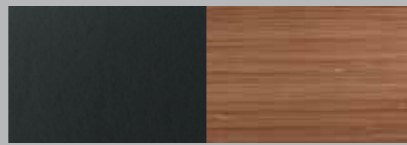


SLEEK ECRU .....4U7

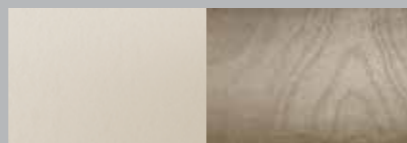


AMBER CS .....4X2

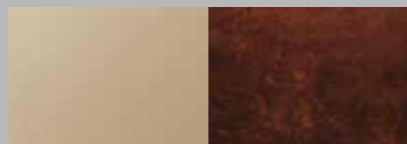
**INTERIOR**



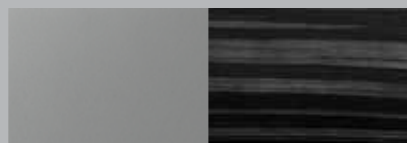
BLACK BAMBOO



MELLOW WHITE ASHBURL/CHAMPAGNE GOLD



IVORY WALNUT/DARK BROWN



LIGHT GREY EBONY

**LEXUS DISTANCE PLANS**

**INTRODUCTION**

Welcome to the growing group of value-conscious people who drive Lexus. We are proud of the advanced engineering and quality construction of each vehicle we build.

The Lexus Distance Plans give you and all Lexus owners peace of mind and fixed-costs motoring. The Lexus Distance Plans are fully supported and approved by Toyota SA Motors. They are designed to give you, the motorist, a value-added product that supports your needs by containing motoring costs. Lexus Distance Plans offer all customers access to service at any Lexus dealership in South Africa and Lexus dealerships in our neighbouring countries, i.e. Namibia, Lesotho, Swaziland and Botswana.

The Lexus Distance Plans cover all your normal operating condition services up to 4 years/100 000km. All servicing must be carried out according to the specified service intervals stipulated in the vehicle's Book of Life to ensure that the Distance Plan and the vehicles warranty remains valid.

All Lexus owners have an option to upgrade the Lexus Distance Plans. Lexus offers our customers various options in terms of choice of cover, depending on individual requirements.

Please feel free to contact your nearest Lexus dealer for the various options to upgrade your Distance Plan. We at Lexus appreciate and value your support and aim to make vehicle ownership a positive experience for all our customers. Please read on to familiarise yourself with the Lexus Distance Plan.

**INCEPTION DATE OF PLAN**

The inception date of the Lexus Distance Plans will be the same as the vehicle's warranty inception date. The same will apply to all demonstration vehicles sold by a Lexus dealership.

**WHAT DOES THE LEXUS DISTANCE PLAN COVER?**

Covered:

- All manufacturer-specified services (normal schedule) up to 4 years/100 000, km whichever occurs first (\*1)

**WHAT DOES THE LEXUS DISTANCE PLAN PLUS COVER?**

Covered:

- All manufacturer-specified services (normal schedule) up to 4 years/ 100 000km whichever occurs first (\*2)
- Front disc brake pads (limited to 5 sets)
- Rear disc brake pads (limited to 3 sets)

**WHAT DOES THE LEXUS DISTANCE PLAN COMPLETE COVER?**

Covered:

- All manufacturer-specified services (normal schedule) up to 4 years/ 100 000km, whichever comes first
- Mechanical components - repaired or replaced due to normal wear and tear

**WHAT IS NOT COVERED BY THE LEXUS DISTANCE PLANS?**

Not Covered:

- Obtaining fuel
- Engine top-up oil and other lubricants, and service items required between routine servicing of the vehicle
- Tyres, wheel alignment and wheel balancing
- (\*1) Maintenance repairs of wearing items for Distance Plan (e.g. brakes, clutch, exhaust, battery, etc.)
- (\*2) Maintenance repairs or wearing items for Distance Plan Plus (e.g. brake discs, brake calliper, clutch, exhaust, battery, etc.)
- Non-Lexus approved additives
- Paint/body/trim repairs
- Accessories
- Unreasonable requests
- Alterations and modifications
- Driver abuse/negligence or unreasonable use, including any form of competition

- Insurance-related claims and repairs
  - Accident damage
  - Rattles and squeaks
  - Cleaning of fuel system
  - Cracked or broken glass
  - Expenses incurred at non-Lexus dealers
  - Flood, riot, weather and fire damage
  - Engine tuning
  - Repairs or damage as a result of non-compliance with service requirements or warranty obligations
  - Damage incurred through the vehicle having been driven with insufficient engine lubricants or coolant
  - Any claims arising outside the borders of South Africa, Namibia, Lesotho, Swaziland or Botswana
  - Items requiring replacement as a result of severe operating conditions will be for the customer's account. The severe operating schedule is not covered in any of the Distance Plans
- NB: Consult your Lexus dealer for more information on your vehicle's warranty terms and conditions.

**MY LEXUS**

**AS A LEXUS OWNER, YOU CAN SIGN UP FOR A PERSONAL "MY LEXUS" PROFILE.**

With your profile you can:

- Update your personal details
- Book a service
- Manage your communication and monitor your transactions

Register at [www.lexus.co.za](http://www.lexus.co.za)

**LEXUS LIFE**

Our online magazine, *Lexus Life* celebrates innovative design, sustainable technologies and premium experiences around the globe.

Download the app from Google Play or the App Store.

Keep up to date with all things Lexus here:

[www.lexus.co.za/lexus-life](http://www.lexus.co.za/lexus-life)



# THE LEXUS LS

Find Lexus South Africa on:  Lexus South Africa or on  @Lexus\_SA  lexus\_southafrica  
For a detailed list of specifications please visit [www.lexus.co.za](http://www.lexus.co.za)

PMN05X0007 Date 2016/09. Certain vehicle details and specifications contained in this brochure may differ from available models. Toyota Motor Corporation of Japan and Toyota SA (Pty) Ltd. make no warranties, either expressed or implied, concerning the verisimilitude of contained material. Toyota reserves the right to alter any details of specifications and equipment without notice. Waste Tyre Registration Number: TPREG0031GAU.

© 2015 Lexus South Africa\* reserves the right to alter any details of specifications and equipment without notice. Details of specifications and equipment are also subject to change to suit local conditions and requirements. Please enquire at your local Lexus Authorised Dealer of any such changes that might be required for your area.

**South African vehicle specifications may differ.**